

# MK3053C

KNUCKLE BOOM

Crane Capacity **2.98t x 1.8m**  
 Max. Working Radius **14.3m**  
 Max. Lifting Height **16.95m**  
 (1.0t x 5.2m with Jib)

**NEW**

Specifications

Model		MK3053C
Crane capacity Main boom / Jib		2.98t x 1.8m / 1.0t x 5.2m
Max. working radius Main boom / Jib		9.4m / 14.3m
Max. lifting height (on the ground) Main boom / Jib		12.0m / 16.95m
Boom	Telescopic system	Type Fully automatic 5-section pentagonal telescopic boom Boom length 3.1m - 10.3m Boom telescoping stroke / time 7.2m / 45.4sec for Diesel, 42.3sec for Battery
	Boom hoist system	Hoist angle / time 0 to 85deg / 26sec
	Jib	Telescopic system Type Fully automatic 3-section pentagonal telescopic jib Jib length 2.3m - 4.8m Jib telescoping stroke / time 2.5m / 18.6sec
	Jib hoist system	Hoist angle / time 195deg / 17.5sec
Slew system		Slew angle / time 360deg / 1.3rpm for Diesel, 1.4rpm for Battery
Winch system		Hook speed 40.4m/min for Diesel, 39.8m/min for Battery (4 layers, single fall)
Outrigger system		Type Hydraulic cylinder direct acting type Max. extended width (outer dims) (Lateral) 4,665x (Front) 4,740x (Rear) 4,800mm Extended position Multi (stepless)
Travel system		Type Hydraulic motor driven, stepless speed changer Travel speed 0 - 2.4km/h Gradability NARROW / WIDE (STD) 17.5deg / 24.7deg Crawler ground length x width 950mm x 180mm Gauge width 780mm - 1,050mm Ground pressure 83.4kpa [0.85kgf/cm <sup>2</sup> ]
Engine (Diesel / Diesel + Electric)		Model KUBOTA Z482-E4B Displacement 0.479L [479cc] Rated output 7.2kw/2,600min <sup>-1</sup> [9.8ps/2,600rpm] Fuel Diesel
Electric Motor (Diesel + Electric)		Motor type Totally enclosed fan-cooled motor 4.0kw, 4P 380V(200-415V) Type Lithium Titanate Battery 5-hour rate capacity DC55V-135Ah, 7.4kWh Input Voltage / current Single phase AC200V/16A, AC100V/14A
Battery system (Battery spec)		Charging time with AC-200V 80%:2h20min / 100%:3h30min with AC-100V 80%:5h20min / 100%:7h00min Operating time Up to a full working day if charged during operation Charging during operation Available
Remote control system		Type Paddle type radio & Proportional control
Overall length x width x height		3,195mm x 780mm x 1,945mm
Machine weight (Diesel + Electric / Diesel, Battery)		2,900kg / 2,875kg
Optional equipment		EBU075 (extra battery unit), Black or White rubber tracks (depends on spec)

Rated Total Load Chart for 4 Falls with Main Boom unit:kg

Working Radius (m)	2.95m Boom			4.76m Boom			6.57m Boom			8.38m Boom			10.19m Boom		
	OR Extended Position	OR Extended Position	OR Extended Position	OR Extended Position	OR Extended Position	OR Extended Position	OR Extended Position	OR Extended Position	OR Extended Position	OR Extended Position	OR Extended Position	OR Extended Position	OR Extended Position	OR Extended Position	
	Max.	Mid.	Min.	Max.	Mid.	Min.	Max.	Mid.	Min.	Max.	Mid.	Min.	Max.	Mid.	Min.
1	2980	2980	2980	2570	2570	2570	2380	2380	2380	2000	2000	2000	1450	1450	1450
1.5	2980	2980	2980	2570	2570	2570	2380	2380	2380	2000	2000	2000	1450	1450	1450
1.8	2980	2980	2980	2570	2570	2570	2380	2380	2380	2000	2000	2000	1450	1450	1450
2	2865	2865	2865	2570	2570	2570	2380	2380	2380	2000	2000	2000	1450	1450	1450
2.19	2715	2715	2715	2570	2570	2265	2380	2380	2165	2000	2000	2000	1450	1450	1450
2.5				2405	2330	1905	2205	2140	1875	2000	2000	1670	1450	1450	1450
3				2030	2000	1515	1940	1805	1510	1755	1645	1295	1450	1450	1125
3.5				1735	1720	1265	1705	1525	1225	1545	1380	1045	1450	1210	910
4				1500	1490	1085	1490	1290	1005	1360	1165	860	1255	1025	750
4.5							1300	1085	820	1200	990	720	1100	880	630
5							1130	905	670	1060	850	610	965	760	535
5.5							975	750	545	930	725	525	850	660	460
5.81							860	660	475	790	605	420			
6							815	625	450	755	575	395			
6.5							710	535	390	670	500	345			
7							620	455	335	595	440	300			
7.5							530	390	290	525	385	260			
7.62							510	375	285	510	370	250			
8										470	335	230			
8.5										415	290	200			
9										365	255	170			
9.3										340	230	160			
9.43										330	225	155			

\*The weight of hook block (30kg) must be included as part of the load shown in the RTL chart.

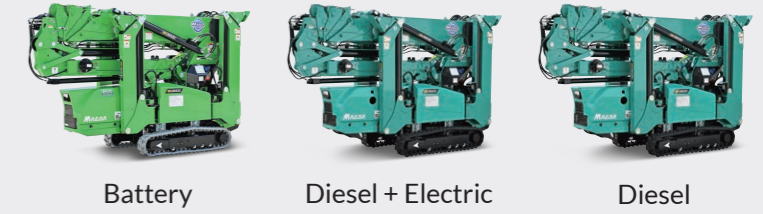
Rated Total Load Chart for Fixed Hook unit:kg

Boom	Boom Angle (°)	Jib Angle (°)	2.27m Jib			3.54m Jib			4.81m Jib		
			OR Extended Position			OR Extended Position			OR Extended Position		
			Max.	Mid.	Min.	Max.	Mid.	Min.	Max.	Mid.	Min.
3.05m Boom	85	90	950	950	950	950	950	950	950	950	950
		85	950	950	950	950	950	950	610	610	610
		55	950	950	950	710	710	710	610	610	610
		0	950	950	950	605	605	605	445	445	445
		90	950	950	950	950	950	950	950	950	950
		85	950	950	950	950	950	950	610	610	610
	45	90	950	950	950	950	950	950	950	950	950
		85	950	950	950	950	950	950	610	610	610
		55	950	950	950	710	710	710	610	610	610
		0	950	950	950	605	605	605	445	445	445
		90	950	950	950	950	950	950	950	950	950
		85	950	950	950	950	950	950	610	610	610
4.86m Boom	85	90	950	950	950	950	950	950	950	950	950
		85	950	950	950	950	950	950	610	610	610
		55	950	950	950	710	710	710	610	610	610
		0	950	950	950	605	605	605	445	445	445
		90	950	950	950	950	950	950	950	950	950
		85	950	950	950	950	950	950	610	610	610
	67	90	950	950	950	950	950	950	950	950	950
		85	950	950	950	950	950	950	610	610	610
		55	950	950	950	710	710	710	610	610	610
		0	950	950	950	605	605	605	445	445	445
		90	950	950	950	950	950	950	950	950	950
		85	950	950	950	950	950	950	610	610	610
6.67m Boom	85	90	950	950	950	950	950	950	950	950	950
		85	950	950	950	950	950	950	610	610	610
		55	950	950	950	710	710	710	610	610	610
		0	950	950	950	605	605	605	445	445	445
		90	950	950	950	950	950	950	950	950	950
		85	950	950	950	950	950	950	610	610	610
	50	90	950	950	950	950	950	950	950	950	950
		85	950	950	950	950	950	950	610	610	610
		55	950*	670	480	710	550	395	610	460	330
		0	800	555	375	590	410	280	445	320	205
		90	900	595	320	900	595	320	900	595	320
		85	850	560	310	820	540	320	610	525	320
8.48m Boom	85	90	950	950	950	950	950	950	950	950	950
		85	950	950	950	950	950	950	610	610	610
		55	950	950	950	710	710	710	610	610	610
		0	950	950	950	605	605	605	445	445	445
		90	950	950	950	950	950	950	950	950	950
		85	950	950	950	950	950	950	610	610	610
	35	90	950	950	950	950	950	950	950	950	950
		85	950	950	950	950	950	950	610	610	610
		55	630	420	245	530	355	210	455	305	175
		0	510	355	185	400	275	140	325	220	115
		90	380	260	105	300	210	80	250	170	55
		85	380	260	105	300	210	80	250	170	55
10.29m Boom	85	90	950	950	950	950	950	950	950	950	950
		85	950	950	950	950	950	950	610	610	610
		55	950	950	950	950	950	950	610	610	610
		0	950	950	950	605	605	605	445	445	445
		90	950	950	950	950	950	950	950	950	950
		85	950	950	950	950	950	950	610	610	610
	55	90	950	950	950	950	950	950	950	950	950
		85	950	950	950	950	950	950	610	610	610
		55	950	950	950	950	950	950	610	610	610
		0	950	950	950	605	605	605	445	445	445
		90	950	950	950	950	950	950	950	950	950
		85	950	950	950	950	950	950	610	610	610
10.29m Boom	85	90	950	950	950	950	950	950	950	950	950
		85	950	950	950	950	950	950	610	610	610
		55	950	950	950	950	950	950	610	610	610
		0	950	950	950	605	605	605	445	445	445
		90	950	950	950	950	950	950	950	950	950
		85	950	950	950	950	950	950	610	610	610
	40	90	950	950	950	950	950	950	950	950	950
		85	950	950	950	950	950	950	610	610	610
		55	950	950	950	950	950	950	610	610	610
		0	950	950	950						

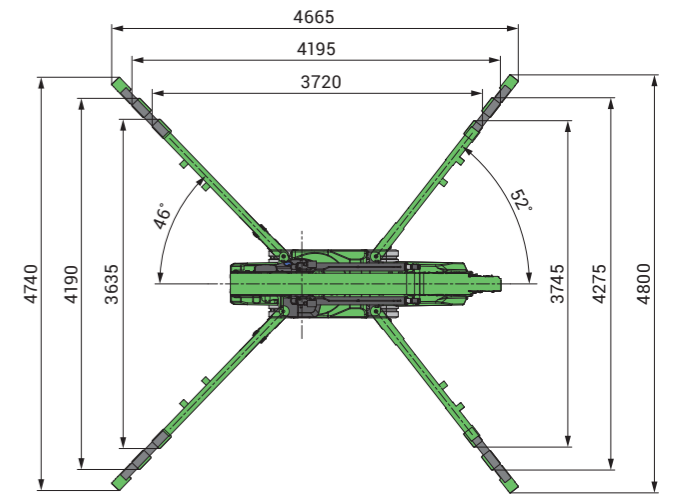
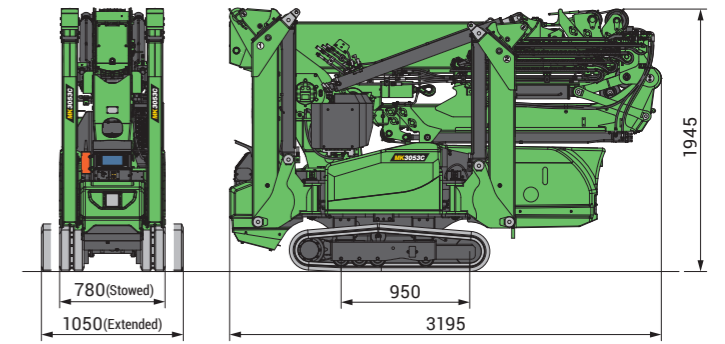
# MK3053C

Automatic & Stepless Multi Outrigger Setting  
 Fully Proportional Radio Remote Control  
 Variable Crawler Gauge  
 Main Boom with 4 Falls Hook Mode  
 Semi-Automatic Leveling  
 Semi-Automatic Jib & Boom Stowing  
 Diesel / Electric / Battery spec

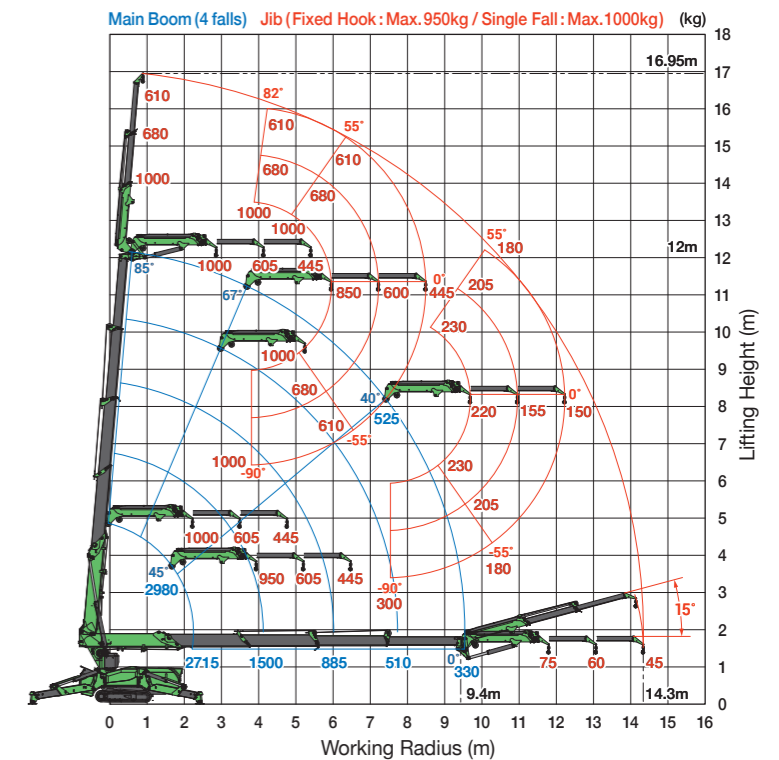
## Full Lineup Spec



Dimensions (mm)



Working Range Chart (Outriggers Position : Max.)



Battery

The next-generation spider crane equipped with a variety of new functions

Automatic & Stepless Multi Outrigger Setting



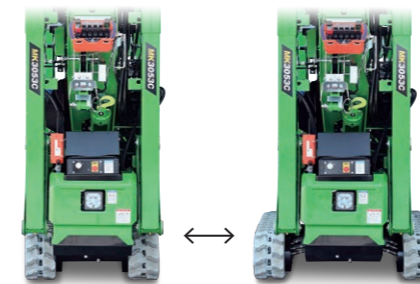
Fully Proportional Radio Remote Control



New Programmable Moment Limiter



Variable Crawler Gauge



Lifting mode variations

Fixed Hook  
 Max. Capacity : 950kg



Single Fall  
 Max. Capacity : 1,000kg



4 Falls with Main Boom  
 Max. Capacity : 2,980kg



Detachable Extra Battery Unit  
 EBU075 (Option)

